



LARRAKEYAH PRIMARY SCHOOL

NEWSLETTER

Larrakeyah Primary School | 3 Packard Street Larrakeyah NT 0820

(08) 89813211 | www.larrakeyahprimary.com.au | E: larrakeyah.admin@education.nt.gov.au

Dates to Remember

Friday 6th February
E/C Assembly
Friday 13th February
M/U Assembly

Contents

- [Page 2](#) **Notes Sent Home**
- [Page 3](#) **Defence School Mentor**
- [Page 4](#) **No Mobile Devices**
- [Page 5](#) **Canteen Specials**
No Toys or Valuables
- [Page 6](#) **Bussy's Corner**
- [Page 7](#) **No Right Turn**
Bus Travel

FROM THE PRINCIPAL

Dear Parents and Guardians,

Welcome to the start of the 2026 school year. It is wonderful to see students returning to school and those who are starting their first year at school. A special welcome to our new students who have enrolled and our new staff.

The Northern Territory Government has a \$200.00 per child Back To School Payment Scheme. The Back To School Scheme entitlement funds are provided to schools on behalf of parents. Schools provide the goods and services for parents to purchase with their entitlement. Parents or guardians of NT students enrolled from Preschool to Year 12 in Term 1 are eligible for the Back To School Payment Scheme which must be accessed by the end of Term 3. However, parents or guardians of preschool students enrolled in an NT school can access the entitlement in the term the student first enrolls provided their child has not previously enrolled and attended another NT school in 2026. If you have not yet accessed the \$200 NT Government Back To school Payment, please visit the front office.

The School Board has suggested \$150.00 for voluntary parent contributions. Many thanks to those parents who have already made voluntary parent contributions to the school as these funds further assist our school innovative programs and projects. Larrakeyah Primary relies on parent voluntary contributions to enable the school to provide additional student and school resources and programs.

This year, parent voluntary contributions will help to provide:

- Darwin Entertainment Centre venue for the whole school concert
- Subsidising the Extra Curricular Activities – community engagement
- Additional equipment for students to

access at recess and lunch breaks

- Additional technology in classrooms
- Upgrade to student playground areas

The wearing of full school uniform is compulsory in all government schools. Larrakeyah Primary strictly enforces the uniform policy. Please ensure that your child wears their uniform to school every day. This includes the school shorts/skorts if wearing the school shirt. Black/navy leggings may be worn underneath school shorts or school skorts.

Larrakeyah Primary is an Independent Public School (IPS) – one of the first six selected IPS in the Northern Territory and recognised for its commitment to high expectations, high standards and high achievement. We are very proud of our school achievements, particularly winning the 'Best Use of Technology' award last year at the Australian Education Awards, being recognised as one of 34 top schools in Australia and being identified last year as the top government school in the NT for significant student growth over the years in NAPLAN.

I trust 2026 will be a happy and successful year. The partnership between home and school is always important. If you have any concerns or issues regarding your child, we encourage you to contact the class teacher in the first instance. Myself, Brad King (Assistant Principal Middle/Upper Primary), Danni Mattiazzo (Assistant Principal, Early Childhood), Ashleigh Church (Senior Teacher Early Childhood), George Mamouzellos (Senior Teacher Middle Primary Years 3 & 4) and Riley France (Senior Teacher Upper Primary Years 5 & 6) are also available.

Regards

Fathma Mauger
Principal



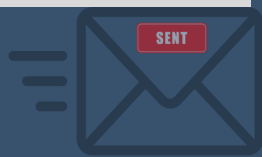
Larrakeyah Primary School is a member of the Darwin City Schools and in partnership with Darwin Middle School, Darwin High School, Northern Territory Open Education Centre, Ludmilla Primary School, Stuart Park Primary School and Parap Primary School.

The community of Larrakeyah Primary School acknowledges and pays respect to the Traditional Custodians of the land on which it is based, the Larrakia People, and pays respect to the Elders—past present and emerging

Recent Notes Sent Home

Audiri

ECA Reminder
Canteen Specials



ABSENCES

To ensure we keep our Attendance Records correct please contact our Front Office if your child/children are absent. You can contact us on 89813211.

Alternatively, you can notify us via our website or use the Audiri App. Tap on School logo then use EFORMS

School Hours

Active supervision of Primary Students is from 8am - 8:15am, and then 2:45pm - 3pm.

Preschool is from 8am to 2pm, whereby students are signed into preschool.

Office Hours
8:00am - 3:30pm

Please do not drop or send your child to school before 7:50am as we are not able to provide supervision. As always, the safety of your child is our priority.

Please contact one of our Assistant Principals should you need to discuss this.



**Larrakeyah
Primary School
uses the Audiri
App to keep
families up to
date**

Available from
Apple App Store
or Google Play



[Back to Contents](#)

Defence School Mentor



hello! and Welcome everyone! If by chance you haven't met me yet or got my emails, my name is Jodie Murdoch, and I am your Defence School Mentor (DSM). For those that don't know, my role is to support the 60+ Defence (Army, Air Force, Navy) students and their families during their time at Larrakeyah Primary. My office located in the Reading Room (next to room 9), and I am here Tuesday, Wednesday 8:30am to 3pm and Thursdays 9 to 2pm this term. If you are a Defence Family and haven't already received an email from me, please let me know so I can make sure I have the right details to contact you and support your child throughout the year. Hopefully you will settle well into your new classes and new routines. If you find you have concerns, your child is having difficulties, or you have deployments happening, please let me and your teacher know so we can suitably give the support your child requires.

DSM Welcome Cuppa & Cake – Defence parents please feel free to join me for a cuppa in the staffroom from **8:15am, Thursday 5 Feb. 2026**. Opportunity for parents to meet new friends and staff at LPS.

Defence Kids Club Thursday lunchtimes in the MP (multi-purpose) room behind the stage. Please encourage your children to come along and hang out with other Defence Kids and have some fun.

Start of year tips:

Names on hats please (and all your child's other stuff) "No hat, no play" no fun in the sunshine with new friends.

Healthy easy bite size lunchboxes so no-one gets left behind eating while new friends play.

Parent phone number slips of paper that your child can give to a new friend for parents to organise an out of school playdate to help cement the friendship from "a kid in my class" to "my friend".

Do not miss the **ADF members and families' event: Welcome to the Top End - Darwin**

ADF members and families are invited to join DMFS and command for a morning of fun and information sharing. A large range of local community groups and sporting organisations will be there, plus local, Territory and Commonwealth government services. It is a great opportunity to find out more about Darwin and surrounding areas and the supports available during your posting. There are fun activities for families as well as military equipment displays from local units. Enjoy the activities in air-conditioned comfort.

Where: **Darwin Convention Centre – Stokes Hill Rd, Darwin**

When: **Saturday 07 February 2026 – 9:00am to 1:00pm**

[Defence Member and Family Support - Darwin Events - 1 Upcoming Activities and Tickets | Eventbrite](#)

Helpful links: Larrakeyah Neighbourhood Community House and get to know Karen and the members of your community, as well as **Robertson Barracks Family Group** for loads of events, activities & fun see <https://www.larrakeyahhouse.com.au/> or Facebook pages.

The Top Ender Magazine is full of handy info *created by Defence Families for Defence Families*. To get the magazine contact www.thetopendermagazine.org.au

Defence Member and Family Support for information on upcoming activities and support see their website or follow them on Facebook. <https://defence.gov.au/members-families/>

Defence Special Needs Support Group <http://dsnsq.org.au/>

Autism NT for local guidance and advice www.autismnt.org.au or their Facebook page

Raising Children parenting website <https://raisingchildren.net.au/>

Jodie Murdoch DSM jodie.murdoch@education.nt.gov.au 89813211

Defence Family Helpline 1800 624 608

NO MOBILE PHONES OR PERSONAL DIGITAL DEVICES



Students in Northern Territory Government Schools are not permitted to use mobile phones or personal digital devices during the school day, including break times. This requirement reduces distractions and disruptions to learning, encourages social interaction and physical activity, and helps to create a safe environment free from cyberbullying and online content.

This means that students are not permitted to have mobile phones or digital devices in their possession during the school day. Phones need to be handed in to the class teacher at the start of the day.

Breaches of this policy will result in phones being confiscated from students.

Thank you for your support in reinforcing this expectation.

CANTEEN SPECIALS

Week 3 – Week 5

Week 3
11th Feb



Nachos with Beef Salsa

Price : \$6.00

Week 4
18th Feb



Butter Chicken with Steamed rice

Price : \$6.00

Week 5
25th Feb



Chicken Nuggets and Chips

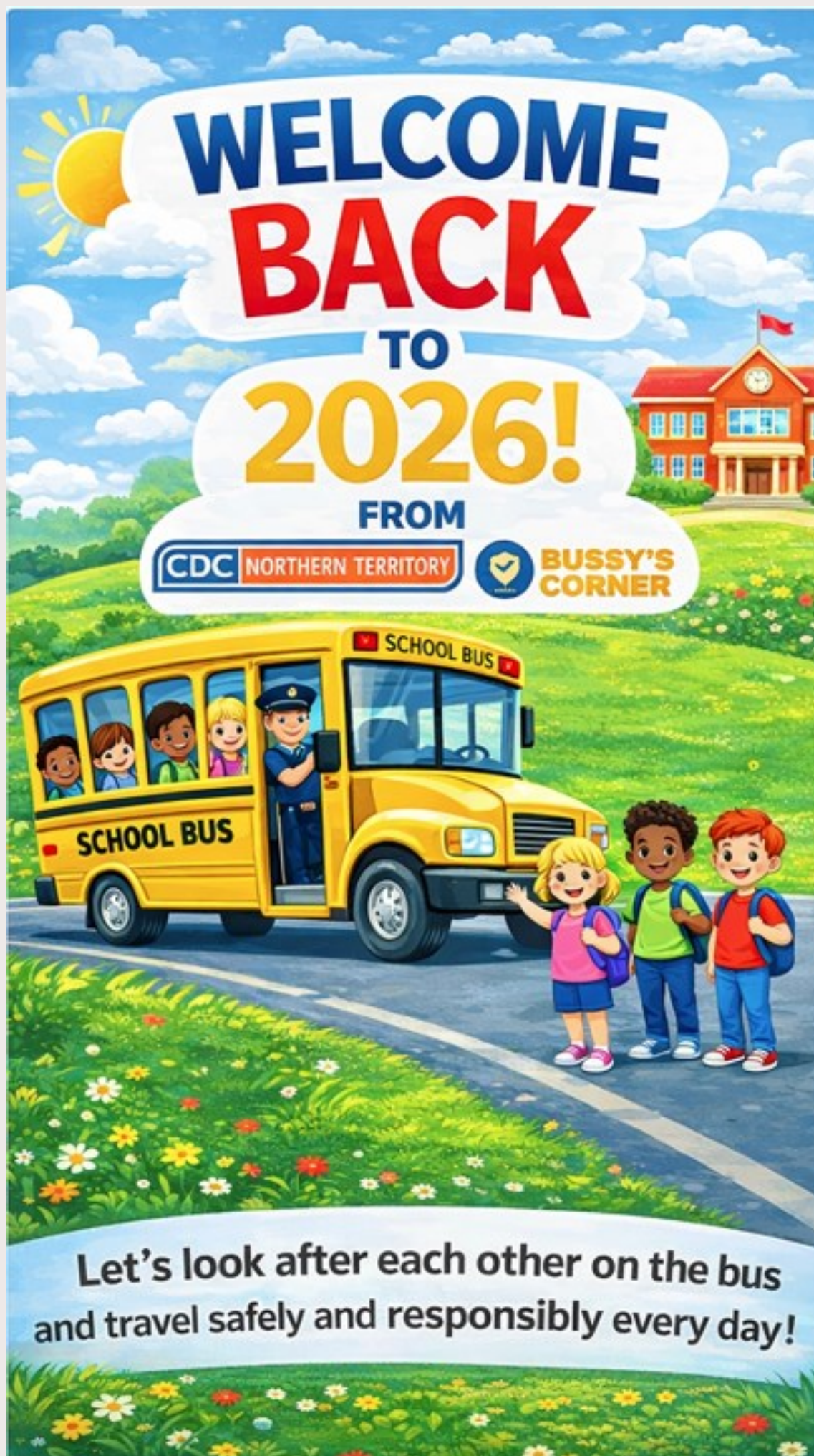
Price : \$6.00

NO TOYS AND VALUABLES

Please note that we kindly ask families to avoid sending students to school with toys or valuable items, including smart watches, as these can easily be misplaced or damaged during the school day.

Any items brought to school remain the responsibility of the student, and the school is unable to accept responsibility for items that are lost or damaged.

[Back to Contents](#)



REMINDER TO PARENTS – NO RIGHT HAND TURN INTO THE SCHOOL

The City of Darwin have erected a sign prohibiting a 'Right Hand Turn' from Packard Street into the main school 'Kiss and Go' carpark. Please be advised parents need to abide by the road regulations.



SCHOOL BUS TRAVEL

Please take note of the bus routes in the links below and speak to your child about the best bus for them to catch. Bus 103 can become quite congested in the afternoon with some students unable to get on due to numbers. Bus 209 is an alternative option for some of our students, especially those who live in Bayview.

Be sure to check the links for details regarding your bus services and policies, including the Code of Conduct for school bus travel (referred to as the Code). It is crucial for parents to become familiar with the Code and ensure that their children understand the policy before allowing them to ride the school bus

[Larrakeyah Primary School - Bus Routes](#)

[Darwin High School/Darwin Middle School](#)

[Rules for catching a School Bus](#)

[Back to Contents](#)